

Hego



GRAVITY

THE SOLID CARPET TILE

BE CREATIVE

Hego's Gravity Carpet tile is a heavy contract carpet tile at a very affordable price, providing an excellent choice for any office environment. Gravity is manufactured from 100% polypropylene fibre which offers outstanding wear performance and appearance retention, and keeps its good looks year after year.

It is available in a palette of 5 colour ways which have been designed specifically for the commercial market and cover an unusually broad spectrum.



Soft and luxurious gravity carpet tiles are ideal for boardrooms and meeting rooms in addition to general office environments which meet different aesthetic requirements.

Hego

GR-5001-GREY



Hego™



GR-5001-GREY

&

GR-5002-CARBON

The logo for Hego, featuring the word "Hego" in a black, handwritten-style script. A thin orange horizontal line is positioned under the "o".

Hego

GR-5001-GREY

&

GR-5002-CARBON

Carpet tiles with a loop pile construction are designed to maintain their good looks in the most demanding heavy traffic areas of buildings, even in corridors and reception areas.,

Hego

GR-5002-CARBON



Hego



GR-5002-CARBON
&
GR-5001-GREY

Hego

GR-5002-CARBON

&

GR-5001-GREY

Hego

Gravity is a subtly textured striped loop pile carpet tile with each colour way perfectly matched to create user friendly experience. Combinations of different colours allows complete freedom of expression creating connections, highlights and transitions enhancing any style of scheme

GR-5003-BLUE



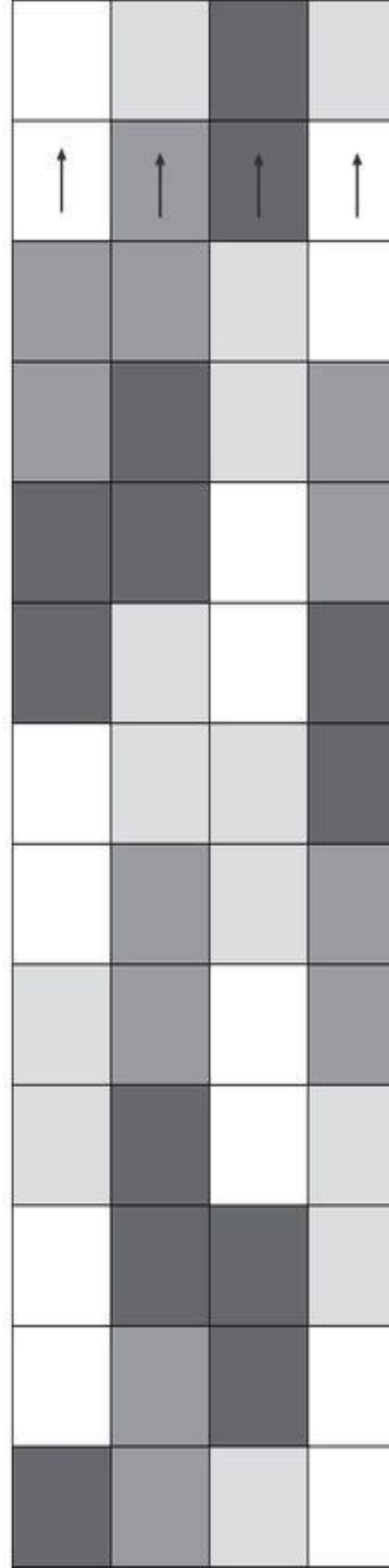
Hego™

GR-5003-BLUE,
GR-5002-CARBON
&
GR-5001-GREY

Hego™



GR-5003-BLUE,
GR-5002-CARBON
&
GR-5001-GREY



Carpet tiles with a loop pile construction are designed to maintain their good looks in the most demanding heavy traffic areas of buildings such as corridors and reception areas.

Hego

GR-5004-BROWN



Hego

GR-5004-BROWN
&
GR-5001-GREY

Hego

GR-5004-BROWN
&
GR-5005-CHOCCLATE

Soft and luxurious gravity carpet tiles are ideal for boardrooms and meeting rooms in addition to general office environments which meet different aesthetic requirements.

Hego

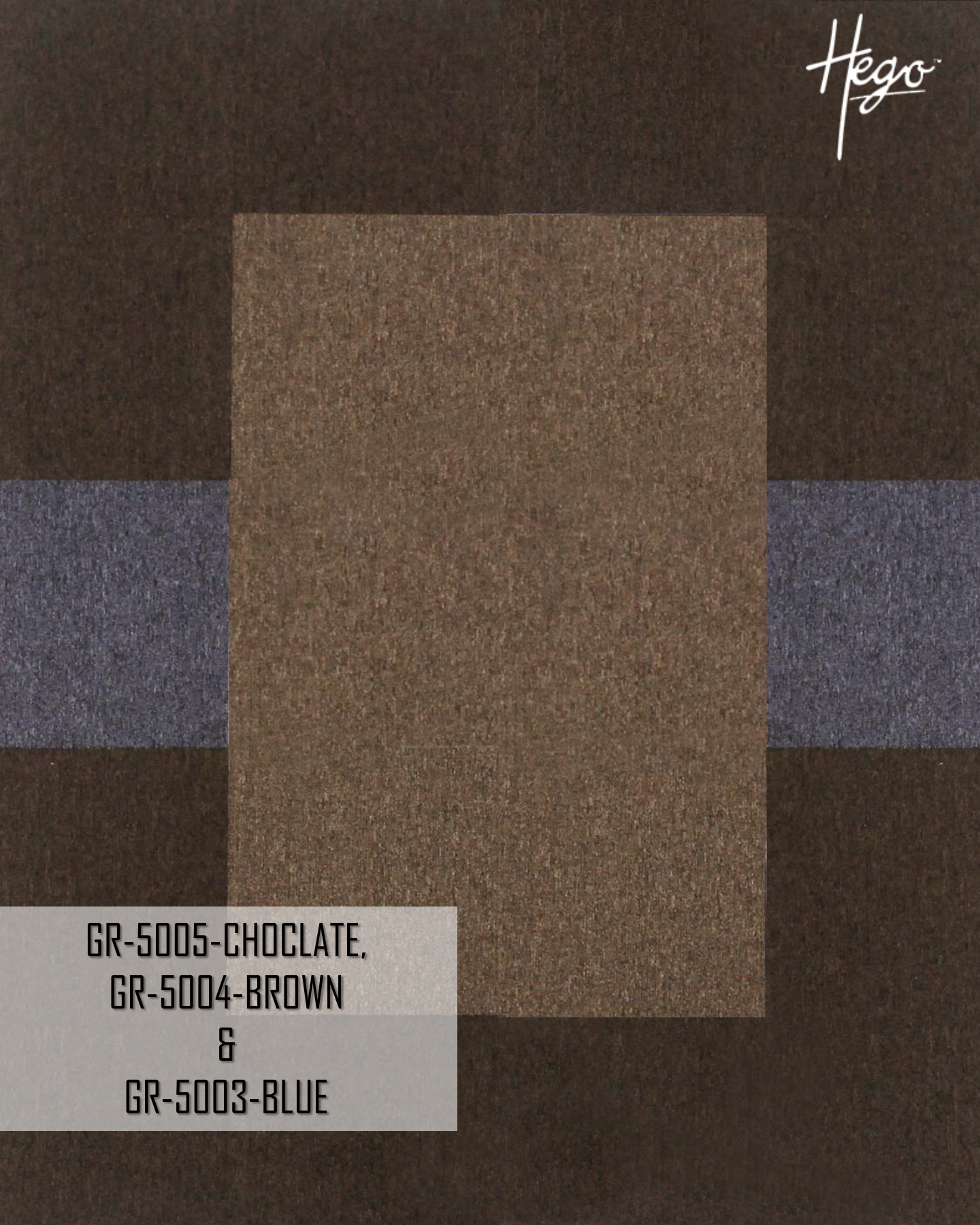
GR-5005-CHOCOLATE





GR-5005-CHOCCLATE,
&
GR-5004-BROWN

Hego



GR-5005-CHOCCLATE,
GR-5004-BROWN
&
GR-5003-BLUE



Hego

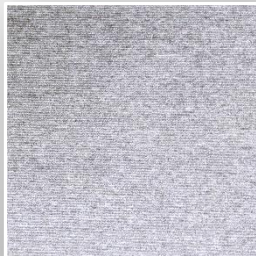
From how they're made to how they perform, we make outstanding floors that are truly sustainable. That's because our floors are good for people, good for buildings and good for the environment. So, from the building they're in to the world outside, we're helping our customers work, live and relax in better environments.

GRAVITY CARPET TILE

Technical Specifications

Construction	-Tufted Level Loop
Material	-100% Polpropylene
Pile Weight	-500 GSM
Pile Height	-4 mm
Backing	-Bitumen Backing
Size	-50cm x 50cm (2ft. X 2ft.)
Qty. in Box	-5 Sq. Meter (53.8 Sq. Ft.)
Area of Use	-Commercial Heavy Duty

It's about the things you can't see a HEGO floor is always beautiful and stylish to look at. A floor that's comfortable to live, work and play on. But looks aren't everything; often, it's the things you can't see that really matter. The way we make our floors is a big part of how we ensure sustainable performance i.e. floors which start performing from the moment they're fitted. We welcome you aboard in this wonderful journey !!



HeGo[™]

www.hego.co.in

WHY CARPET TILE?

Today's modern office environments with open office systems are designed for flexibility to accommodate frequent layout changes. A modular floor can be quickly adapted to new requirements thereby reducing the cost of reorganisation.

Where carpet tiles are installed, telephone, electrical and other under floor systems remain easily accessible for these changes to be made.

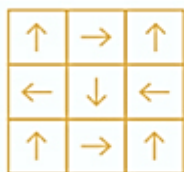
Colour co-ordinated for maximum design flexibility

- Increased speed of installation
- Installation wastage is reduced
- Damaged or soiled tiles can be replaced
- Wear rotation to extend flooring lifespan
- Renovation with minimal disruption
- Compatibility with access systems

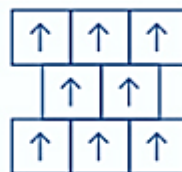
With all this flexibility, we're sure that whatever the specification, whatever the budget, you'll find exactly what you need in our carpet tile portfolio.



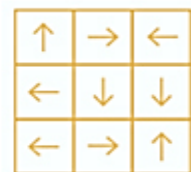
MONOLITHIC



QUARTER TURN



ASHLAR



MIX-AND-MATCH