



Hego

WILTON

Premium Wilton Carpet Collection

EMBRACE THE BEAUTY

HEGO WILTON CARPETS ARE DESIGNED AND MADE USING HIGH QUALITY P.P HEAT SET YARNS, REGARDED AS THE WORLD'S BEST FOR ITS BLEND OF RESILIENCE AND RECOVERY. CELEBRATING INNOVATION WITH A ROBOTIC HIGH-SPEED LOOM THAT GIVES INSTANT COLOUR SWITCHING, WE MAKE CARPETS WHICH REFLECT OUR PASSION AND CULTURE. EVERY WILTON CARPET IS EXPERTLY MADE ; THE PERSONIFICATION OF THE VERY BEST IN MODERN MANUFACTURING BLENDED WITH TRADITIONAL CRAFTSMANSHIP. HEGO'S WILTON CARPETS COLLECTION CARPETS IS AN IMPRESSIVE ARRAY FOR BUILDINGS AND VENUES, DEMONSTRATING THAT GOOD CARPET CRAFT HAS A PLACE IN MODERN INTERIORS AS IT DOES IN BRINGING AUTHENTICITY TO TRADITIONAL BUILDINGS.

THE HEGO WILTON RANGE OF 2023 FEATURES 3 DESIGN STYLES INCLUDING TRADITIONAL , BOTANICAL , & ABSTRACT PATTERNS WITH MULTIPLE COLOR OPTIONS , THE GIVES CUSTOMER VARIETY OF 12 SKUS TO CHOOSE FROM .

PLEASE SEE THE INDEX BELOW :


1. MUGHAL – [PG 3- 10](#)
2. PALACE – [PG 11-18](#)
3. URBAN - [PG 19-26](#)





MUGHAL – 3501 – RED

Hego

A grand, ornate interior room, likely a museum or gallery. The room features a large, intricate red carpet with a repeating floral and geometric pattern in white, blue, and gold. A large, multi-tiered chandelier with numerous lit candles hangs from the ceiling. The walls are white with classical architectural details, including columns, arches, and busts. A white grand piano is visible on the left. In the center, there is a fireplace with a white mantel. To the right, an arched doorway leads to another room. The ceiling is white with a decorative grid pattern and a large, dark, ornate panel in the center.


MUGHAL - 3501 - RED

Hego



MUGHAL – 3502 – BEIGE



A large, elegant dining room with a patterned carpet, wooden tables, and pendant lights. The room features a repeating pattern of floral motifs in red, blue, and white on a beige background. The tables are set with glassware and plates, and the chairs are dark wood with light-colored seats. The lighting is warm and ambient, with multiple pendant lights hanging from the ceiling. The walls are wood-paneled, and there are large windows in the background.

MUGHAL – 3502 – BEIGE

Hego



MUGHAL - 3503 - BLUE



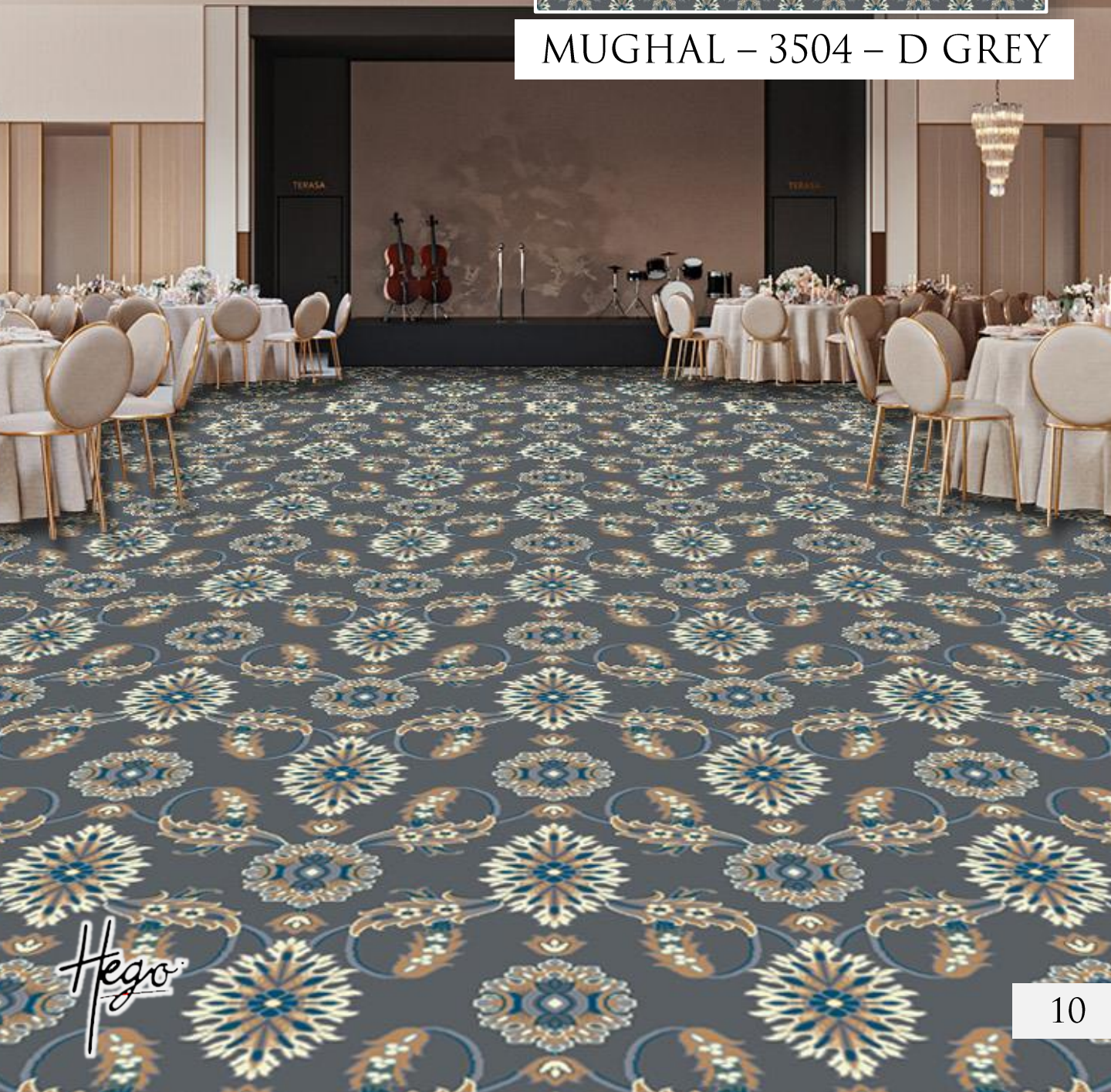
Hego

MUGHAL – 3503 – BLUE

Hego



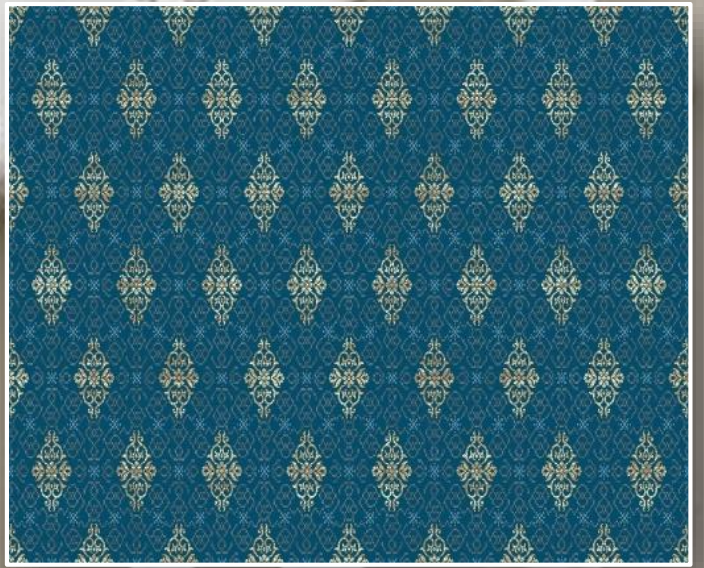
MUGHAL – 3504 – D GREY





MUGHAL – 3504 – D GREY

Hego



PALACE – 3505 – BLUE





PALACE – 3505 – BLUE



PALACE – 3506 – GREY



Hego



PALACE – 3506 – GREY

Hego

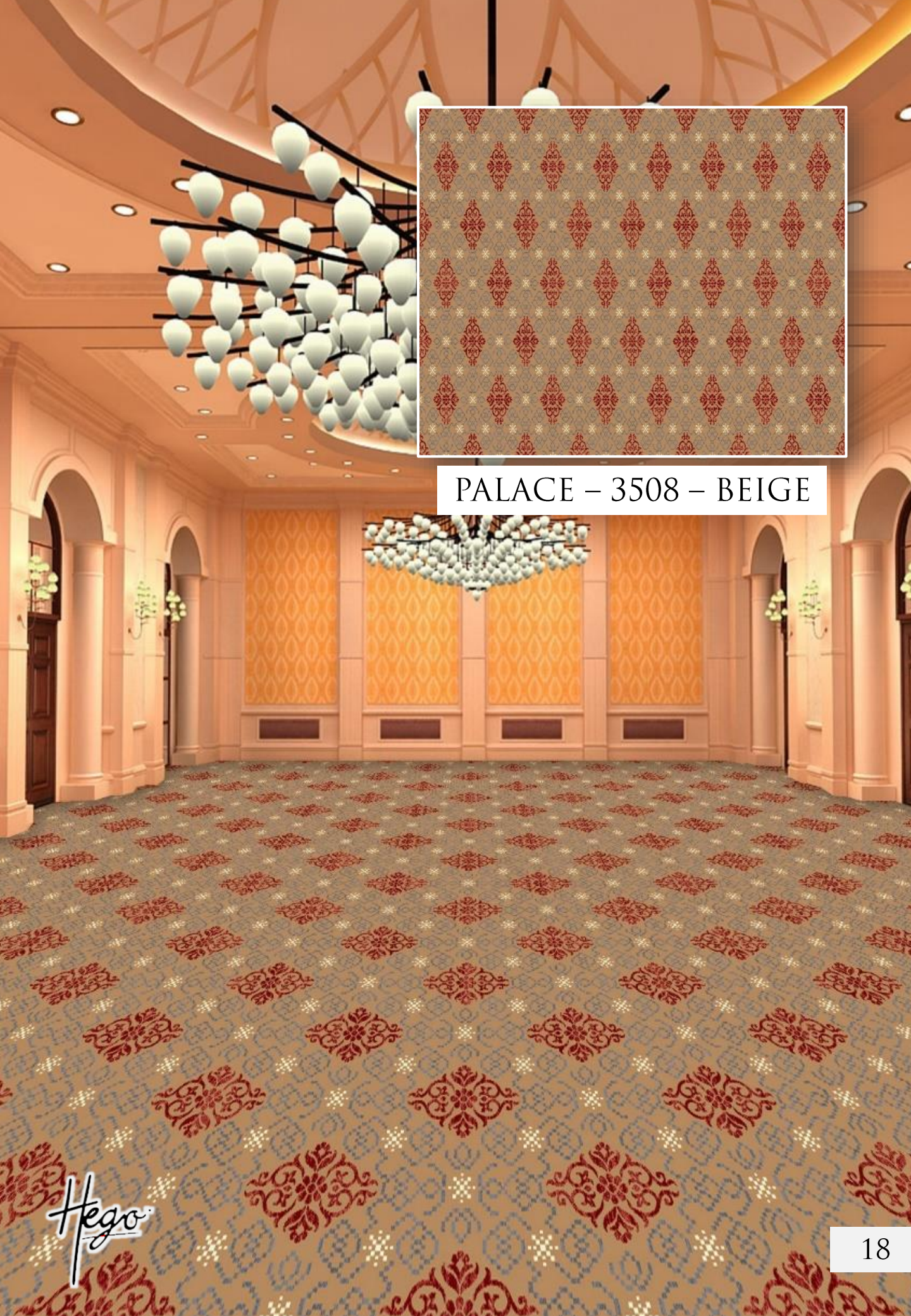


PALACE – 3507 – RED

Hego

PALACE – 3507 – RED

Hego



PALACE – 3508 – BEIGE

Hego



PALACE – 3508 – BEIGE

Hego



URBAN – 3509 – BLUE






URBAN – 3509 – BLUE

Hego



URBAN – 3510 – RED- BEIGE

Hego



URBAN – 3510 – RED- BEIGE

Hego

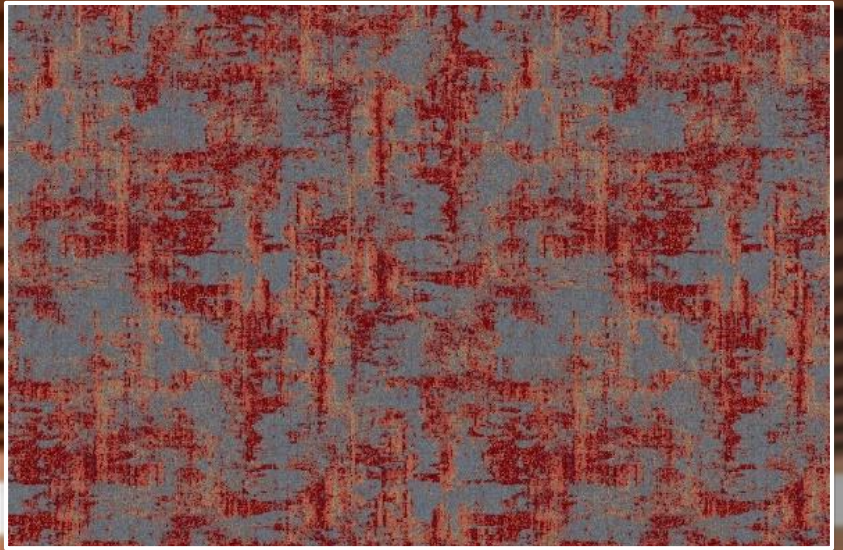


URBAN – 3511 – BLUE- BEIGE






URBAN – 3511 – BLUE- BEIGE



URBAN – 3512 – RED-GREY

The image shows a contemporary interior setting, likely a lounge or reception area. The floor is covered in a large, patterned carpet with a mix of red and grey tones. On the left, a table draped in white cloth holds several framed photographs and a vase of pink flowers. The wall behind the table is composed of light-colored panels with gold-colored trim. Three framed photographs are mounted on the wall, each illuminated by a small, recessed light fixture. The ceiling features a grid of recessed lighting and decorative elements. A white banner with the text 'URBAN - 3512 - RED-GREY' is overlaid on the right side of the image.

URBAN - 3512 - RED-GREY

Hego

TECHNICAL SPECIFICATIONS

QUALITY	- WOVEN WILTON
FIBER	- 100% P.P HEAT SET YARN
PILE POINTS	- 4,80,000 / SQ. MTR.
PILE HEIGHT / TOTAL HEIGHT	- 11MM / 13MM
TOTAL WEIGHT	- 2550 GR / M2 (+/- 5%)
FILLING	- JUTE
BACK COATING	- LATEX
STANDARD ROLL SIZE	- 4 MTR . X 25 MTR.

AREA OF USE

HOSPITALITY I COMMERCIAL I RESIDENTIAL
HOME THEATER I AUDITORIUM

CARE INSTRUCTIONS

VACCUM REGULARY I SPOT CLEAN IMMEDIATELY
TRIM LOOSE PILE OR THREAD I PROFESSIONAL WASH ONLY

NOTE :

1. SPECIFICATIONS ARE SUBJECT TO CHANGE TO IMPROVE PRODUCT & PERFORMANCE
2. SLIGHT COLOR VARIATION MAY OCCUR FROM DYE TO DYE LOT
3. SLIGHT BOWLING COULD BE VISIBLE & SHOULD NOT BE TREATED AS MANUFACTURING DEFECT
4. PRODUCT IMAGES ARE FOR REPRESENTATION PURPOSE ONLY :
ACTUAL PRODUCT MAY DIFFER



SOUND
INSULATION



HEAT
INSULATION



ANTI-STATIC



COLORFAST

Hego

*Imagination,
is the True Magic
Carpet,*