

A modern office lounge area featuring a green sofa, two dark blue armchairs, and a round wooden coffee table with a vase of tulips. The room has a dark grey patterned carpet, a black grid ceiling with green and white pendant lights, and glass-walled offices in the background.

Hego

**Sketch**  
DESIGNER CARPET PLANK

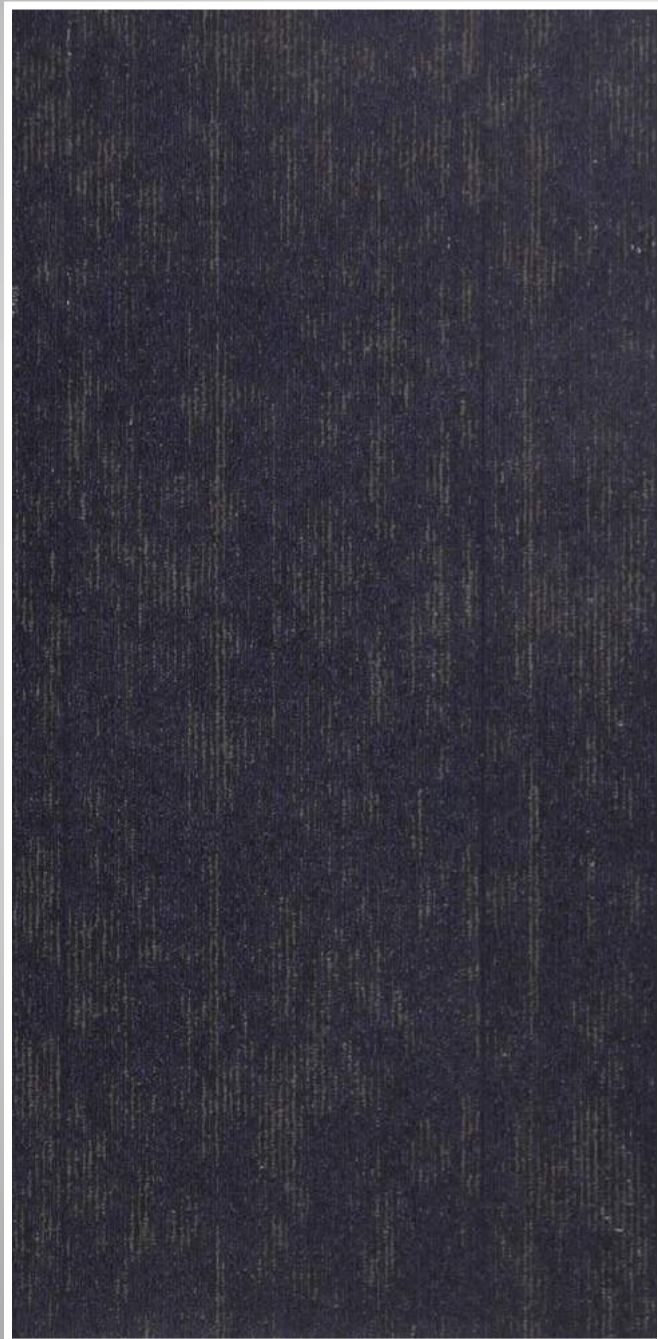
An evolution of traditional square carpet tiles, our 25 x 100 cm our Planks offer a new world of interior design possibilities, with greater flexibility, minimal waste and more creative freedom. Skinny Planks show what's possible outside the traditional carpet tile aesthetic. Use squares and planks together to create to expand your modular horizons, giving you the freedom to create fresh, exciting designs.

INDIGO - 2001,  
GREY-2002 &  
GREY - 2005 - H

*Hego*

What is the benefit of carpet tile without the look of carpet tile? Use a single style of Sketch planks, laid in ashlar pattern. They'll blend across the floor, giving you benefits of modularity and the continuous look of broadloom.

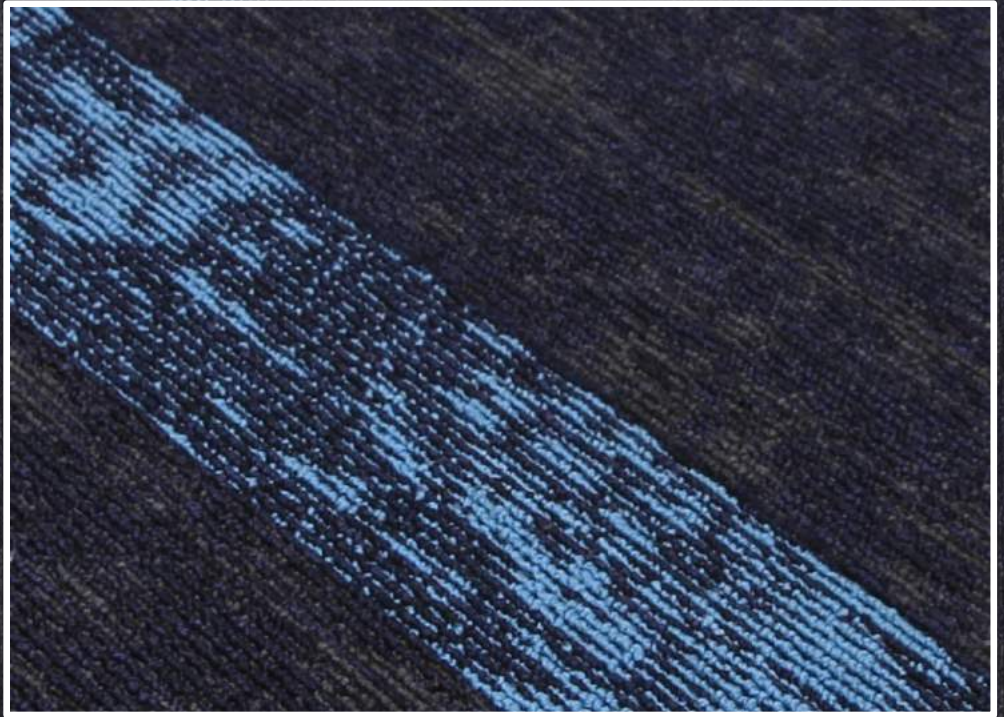
INDIGO - 2001



INDIGO - 2004 - H



INDIGO - 2001 &  
INDIGO - 2004 - H



*Hego*

INDIGO - 2001 &  
INDIGO - 2004 - H



*Hegor*



INDIGO - 2001



INDIGO - 2004 - H



GREY - 2001

Hego

INDIGO - 2001



INDIGO - 2001 &  
INDIGO - 2004 - H



*Hegro*



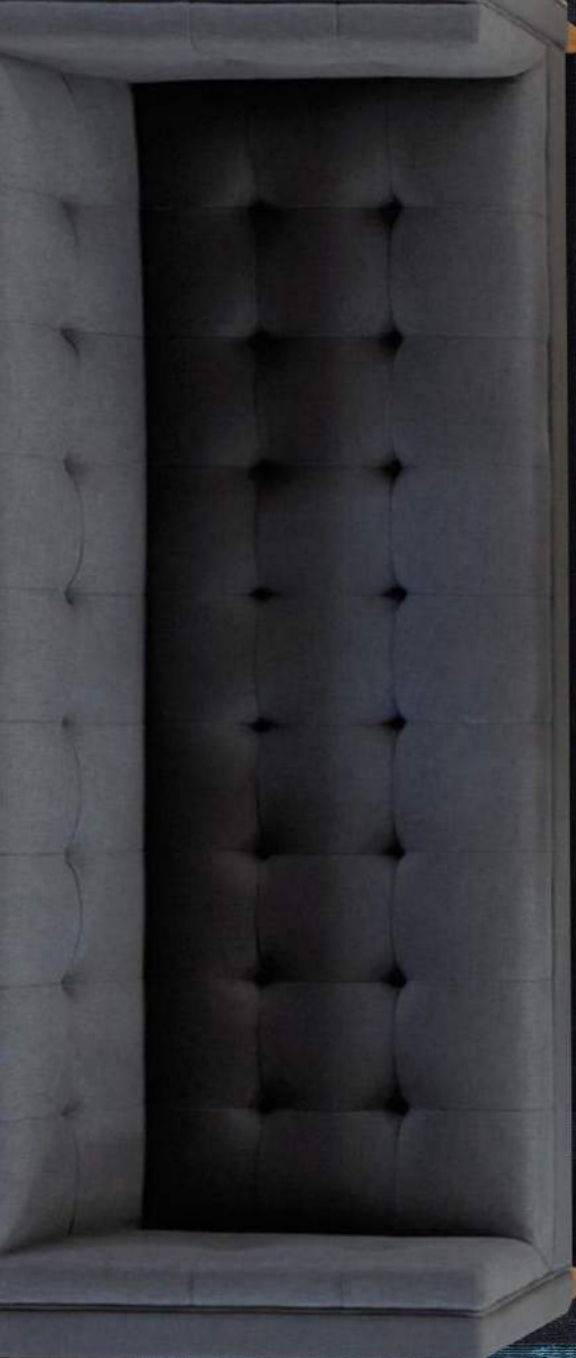


INDIGO - 2001,  
INDIGO - 2004 - H &  
GREY - 2005 - H

*Hego*

INDIGO - 2001 &  
INDIGO - 2004 - H

*Hego*



INDIGO - 2001 &  
INDIGO - 2004 - H

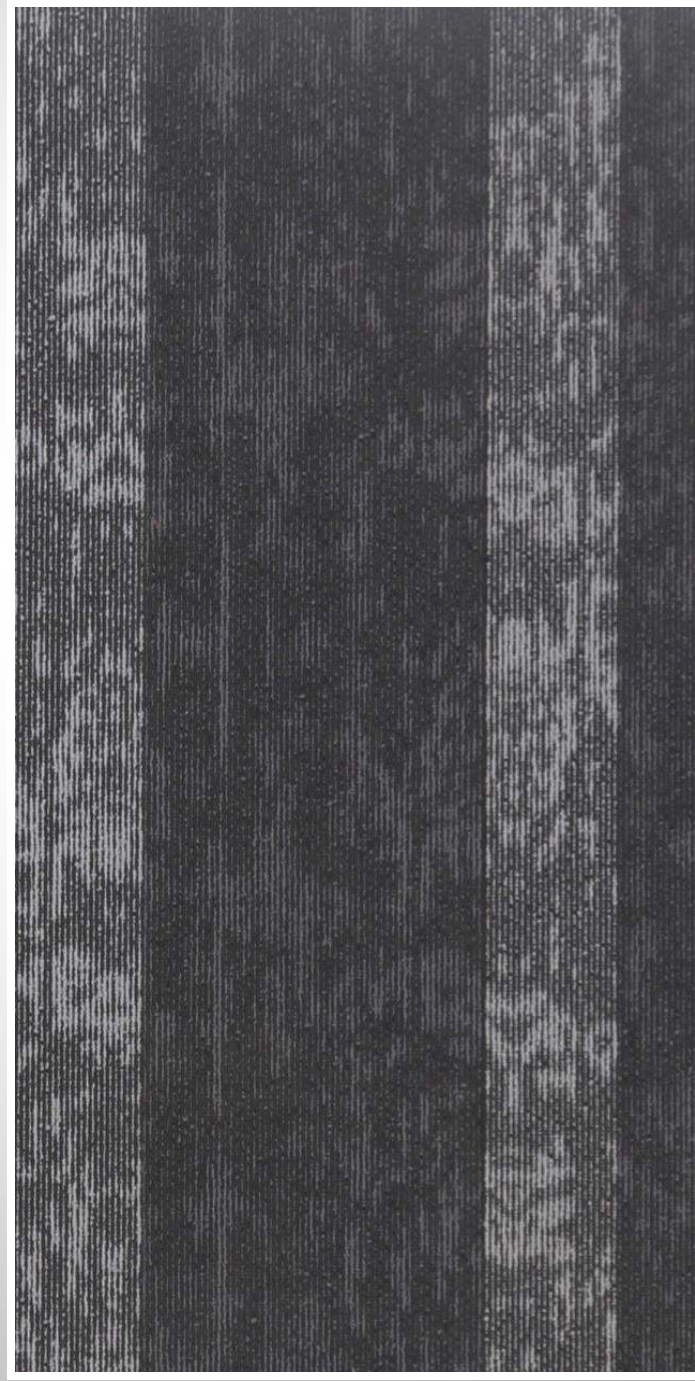
*Hego*

The scale and directionality of Sketch planks gives you an expanded range of design options which creates floors that reflect geometry and flow of surrounding spaces .

GREY - 2002



GREY - 2005 - H



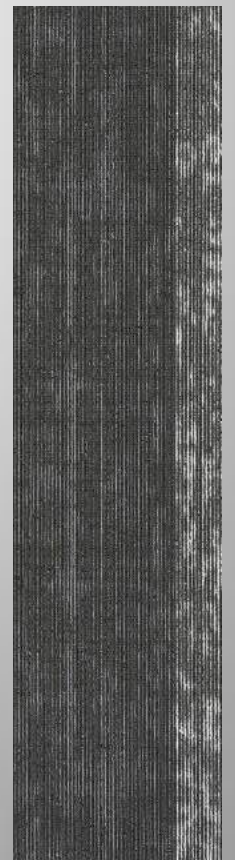


GREY - 2002 &  
GREY - 2005 - H

*Hego*



GREY - 2001



GREY - 2005 - H

"Let food be thy medicine"

— Hippocrates

GREY - 2002 &  
GREY - 2005 - H



Hego

INDIGO - 2001,  
GREY - 2002  
BROWN - 2003

*Hego*



GREY - 2002 &  
GREY - 2005 - H



*Hego*

GREY - 2002  
GREY - 2005 -

*Hego*

Love the look of abstract flooring? Patterns in Hego Sketch offer you same patterning possibilities. You also get a flooring that is soft, slip resistant and much more economical than a designer surface.

BROWN - 2003



BROWN - 2006 - H





BROWN - 2003 &  
BROWN - 2006 - H

*Hego*

Hego®



BROWN - 2003



BROWN - 2006 - H

BROWN - 2003 &  
BROWN - 2006 - H

*Hego*

BROWN - 2003 &  
BROWN - 2006 - H

Hego



BROWN - 2003 &  
BROWN - 2006 - H







BROWN - 2003 &  
BROWN - 2006 - H

*Hego*




INDIGO - 2001,  
GREY - 2002  
BROWN - 2003

*Hego*

The Hego logo is written in a white, cursive, handwritten-style font in the top left corner of the image.

INDIGO - 2004-H,  
GREY-2002 &  
GREY - 2005 - H

The background of the advertisement is a close-up, top-down view of a floor made of interlocking square tiles. The tiles have a dark grey, almost black, color with a fine, wood-grain-like texture. Some tiles are accented with a vibrant blue color. In the lower right quadrant, one tile is missing, and a broken piece of a light-colored tile is visible, showing a small, purple, square-shaped object embedded in the hole.

From how they're made to how they perform, we make outstanding floors that are truly sustainable. That's because our floors are good for people, good for buildings and good for the environment. So, from the building they're in to the world outside, we're helping our customers work, live and relax in better environments.

# Technical Specifications

Construction -Multi Level Loop Pile

Material -100% Polypropylene

Pile Weight -550 GSM

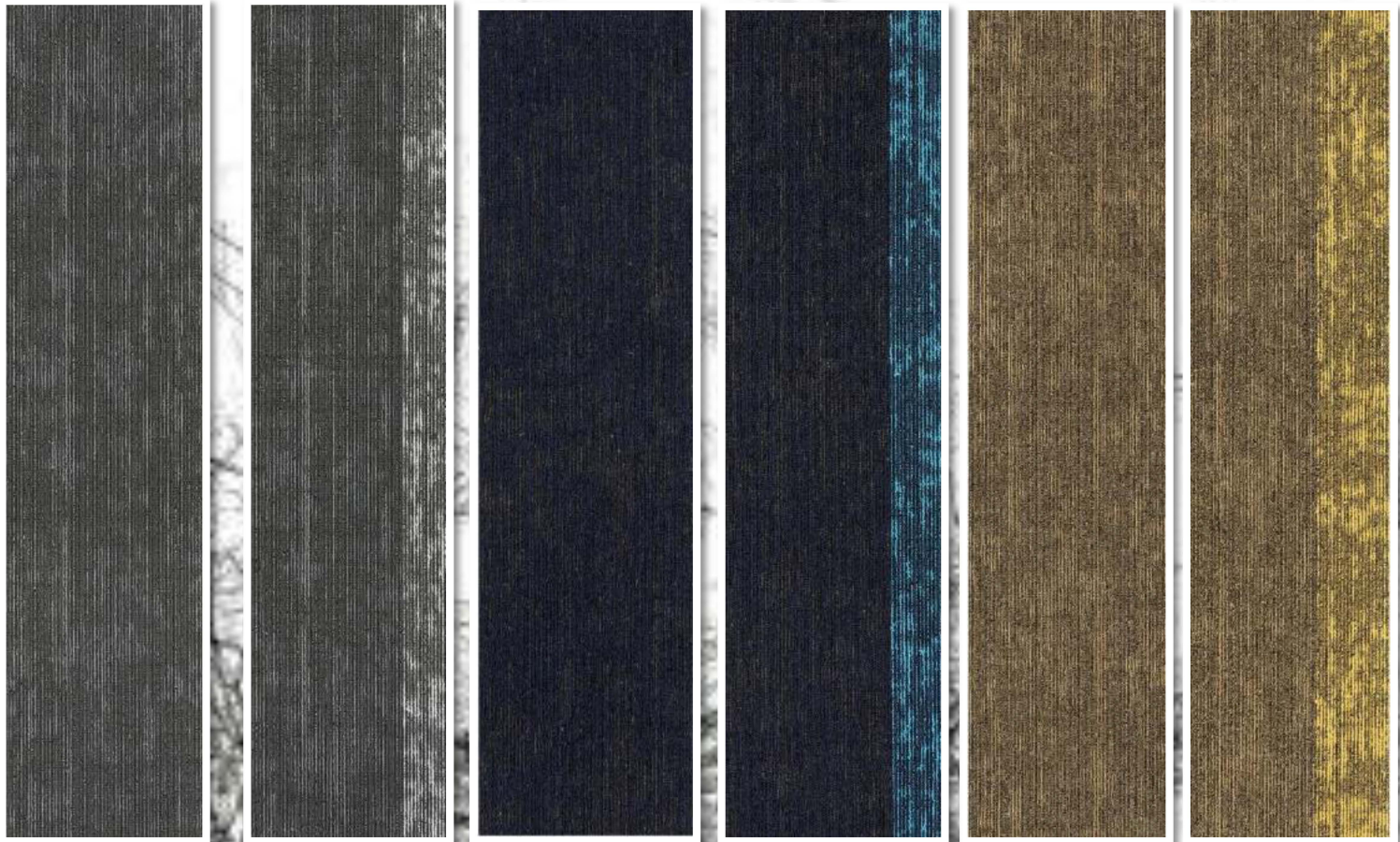
Pile Height -4 mm

Backing -Bitumen Backing

Size -25cm x 100cm

Qty. in Box -6 Sq. Meter

Area of Use -Commercial Heavy Duty



*Hego*

[www.hego.co.in](http://www.hego.co.in)